

Village Galleries, since 1970 - 3 West Maui locations. . .

120 DICKENSON ST. 661.4402 • 800.346.0585

VILLAGE GIFT • FRONT & DICKENSON ST. 661.5199

THE RITZ-CARLTON, KAPALUA  
669.1800 800.660.1500

villagegalleriesmaui.com

# Village Galleries of Maui

# Vignette

a thumbnail sketch of gallery events

VOLUME 23 NUMBER 1 Lynn Shue, Owner-Director Dec. 2009- April 2010

DECEMBER 2009 - JUNE 2010 EXHIBITIONS

Joe Fletcher is constantly finding new ways to express his love for Maui and plein air painting. You can find him on-location all over Maui, from Hana to Kapalua to Kula. His enthusiasm is reflected in every colorful oil he paints. View Joe's latest works at both our Lahaina and Kapalua locations.

Right: Joseph Fletcher, *All Lined Up in Lahaina*  
Oil, 12" x 36" \$2150

See Joe at the 2010 Maui Plein Air Painting Invitational.



NOVEMBER 27 - DECEMBER 17, 2009

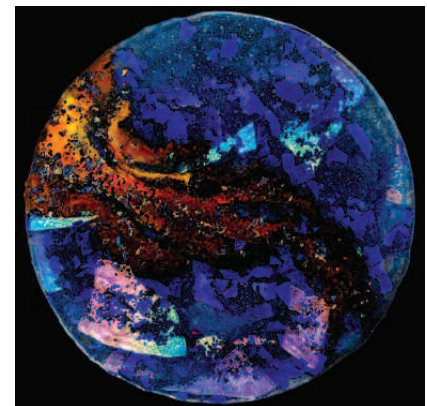
120 DICKENSON STREET • Art Night Reception, Nov. 27, 6-9pm

*Linda Whittemore • Sandra Clark*

Cheerfully we welcome Ian Tremewen's return to our roster. Our first feature for him, this past September, was met with rave reviews. Always working in his strong primary colors and edgy graphic style, Ian expresses in his watercolors a playful combination of abstract shapes against more realistic images. Please stop by to view a great selection of his latest works. Photos available upon request. Lisa Kasprzycki paints Maui on-location. Her many years exploring the island gives her insight into subjects sometimes taken for granted. Her fine drawing ability and skillful color handling define her as one of Maui's finest artists.



Ian Tremewen, Watercolor  
*Long Tall Waterfall*  
42" x 15", \$2950



Above: S. Clark *Lava Flow*, 19" D, Fused Glass, \$1940  
Left: Linda Whittemore, *Finding the Gain*  
20" x 16" Monotype, \$1950

Linda Whittemore takes color and shape to a new place in her beautiful mixed media monotypes. Using her knowledge of viscosity printing, she captures subtle color harmonies with understated skill.

Sandra Clark also layers color, but uses glass as her medium. By fusing the transparent colors together and firing pieces many times, she achieves unbelievable surfaces of brilliant undulating color. We invite you to this wonderful reception for two of Maui's most respected artists.

DECEMBER 18 - 30, 2009

120 DICKENSON STREET

*Small Works*

Our Holiday Show will feature smaller works by Pam Andelin, Lisa Kasprzycki, Stuart Sharp, Suzanne de Cillia and others. We end our year with a heartfelt mahalo to all our wonderful clients, friends and artists who have made 2009 a success. 2010 will bring with it new, creative and inspired work. Please find time to visit us when you are next on Maui.

Right: Pamela Andelin, *Kapalua Plein Air*  
Oil, 11" x 16", \$1400



Lisa Kasprzycki, *Alaea Pilali Bay*, Oil. 10"x 22", \$1900

JANUARY 1 - 21, 2010 *Carleton • Stephen Burr*

Art Night Reception: Friday, January 1st, 6 - 9 pm 120 DICKENSON ST.



Carleton, *Sunny Front Street Morning*, Oil, 12" x 16", \$850

Carleton recently won the 2010 poster contest for Lahaina (see page 8 to order 2010 Poster). His intuitive eye for color and light recreates his visions of Lahainatown. We congratulate him and Carrie on the birth of their son, Carleton.

*See Carleton at the 2010 Maui Plein Air Painting Invitational.*



Stephen Burr, *Puunene Mill*  
22" x 15", Pastel, \$1250

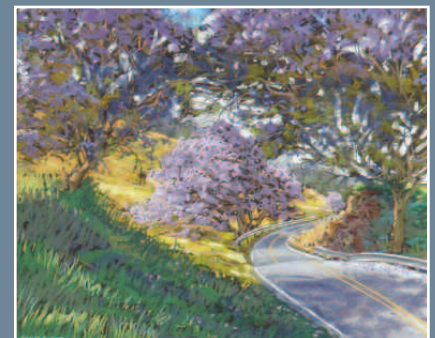
Stephen Burr will be joining this show with a select group of new pastels. With his surprising use of flowing color, he captures the fleeting light play of Maui. Our first show of 2010 will be a feast for your eyes. Please join us to celebrate a new show and new year!



Jamie Roth, *Late Afternoon Reflections*,  
12" x 12", Oil, \$650

Jamie Roth captures Maui light with ease in each of his on-location oils.

Michael Clements pastels have won him a place in our gallery since his inclusion in the 2009 Plein Air Invitational. We are pleased to present his beautiful plein air work of Maui landscapes.



Michael Clements, *Kula Highway Splendor*, 15" x 18", Pastel, \$950



Betty Hay Freeland, *On the Pipiwai Trail, Kipahulu*  
Oil, 26" x 20", \$3850

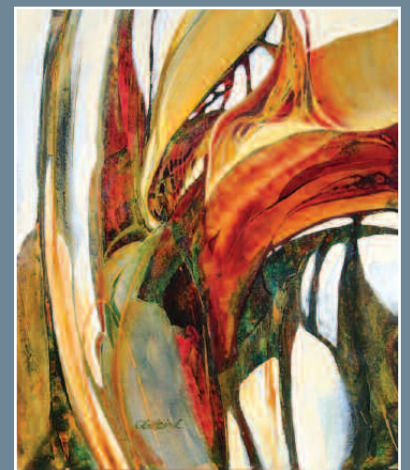
*See Betty Hay at the 2010 Maui Plein Air Painting Invitational.*

JAN. 23 - FEB. 12, 2010

*Betty Hay Freeland*  
*"Shores of Maui"*

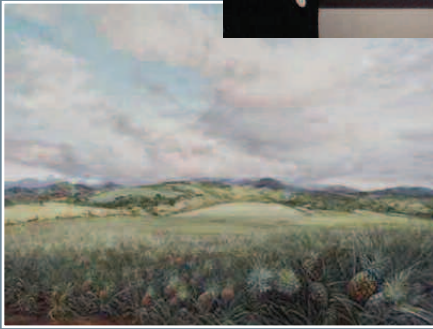
Art Night Reception: Friday  
January 23rd, 6 - 9 pm  
120 DICKENSON ST.

Betty Hay's annual show will feature new on-location work and in-studio oils. She experiences her amazement of Maui in each palette knife painting she presents. We always anticipate a special glimpse into her world with each show. You are invited to our reception for one of Maui's best-loved artists.



Robbie Laird, *Tropical Twist*, Watercolor,  
17" x 14", \$1200

GUEST ARTIST, FRI. DEC. 11, 6-9PM



Joyce Clark, *Kapalua Pineapple*  
Oil, 30" x 40", \$10,500

This past year we have lost two exceptional artists and friends. First, Robert Wagstaff passed away in December 2008 and then one month later Joyce Clark. We will so miss their cheerful smiles and constant encouragement.

Joyce was with the Gallery since the 70's and always made her love for Maui, painting and friends her top priorities.

Robert Wagstaff strived for perfection in his lovely gouache paintings of Hawaii's endemic flowers and birds. He achieved the respect of artists and collectors worldwide.

We will continue to proudly present original works and giclees as long as they are available by these two terrific painters. Their work will always bring joy to all who view it.



N. Robert Wagstaff, 'Ama'u, Original  
Gouache, 8.5" x 11" \$3800  
Giclee Available: \$125



Mary Pettis, *Fleming Patterns*, 12" x 16" Oil, \$1650

### SCHEDULE OF EVENTS

- **Sat., Feb. 13, noon to 3 p.m. - Kick off Paint Out**  
Artists begin the event with the Kick off Paint Out in Kapalua at Kapalua Bay and the D.T. Fleming Beach areas. The freshly painted works of art will be displayed for sale at 4 p.m. at Village Galleries in The Ritz-Carlton, Kapalua and throughout the week.
- **Feb. 14 - 18 - Artists Paint Maui on Location**  
Painters will be seen all over Maui capturing the unique Island landscape and lifestyle.
- **Tues., Feb. 16, 7 p.m. - Lecture** - Jean Stern, Executive Director of the Irvine Museum in Irvine, California and a recognized authority on California Impressionism will present a lecture at the Pioneer Inn. The lecture is free and open to the public.
- **Wed., Feb. 17, 4 p.m. to 6 p.m. - Sunset Paint Out**  
The Sunset Paint Out at Kamehameha Iki Park is another chance to see all of the artists in the same vicinity. The artists will gather at the popular beach park next to 505 Front Street to find inspiration in the sunset, beach scenes, and canoes on display in the park.
- **Fri., Feb. 19, 9 a.m. to 11 a.m. - Lahaina Harbor Quick Draw** The horn sounds at 9 a.m. sharp, and the artists have exactly two hours to complete a painting. The public has an opportunity to watch a painting being created from start to finish.
- **Friday, February 19, 5 p.m. to 9 p.m. - Maui No Ka 'Oi Magazine Gala Reception -100**  
paintings will be unveiled at The Village Gallery, 120 Dickenson Street in Lahaina. Awards will be given and art collectors and art lovers will have an opportunity to view and purchase the fresh work. Refreshments will be served.
- **Saturday, February 20, 9 am - 11 am - Coffee and Pastries with the Artists** - The artists will replace paintings sold on Friday night, and the public will have one last chance to interact with all of the artists and purchase work from the event at The Village Gallery. The show and sale ends at 9 pm that evening.



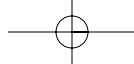
Randall Sexton, *Sweet Beginnings*, Oil  
14" x 18", \$2650



Jacobas Baas, *Pioneer Inn*, Oil, 12" x 16", \$1600

### 2010 PARTICIPATING ARTISTS

- George Allan - Maui
- Ken Auster - California
- Jacobus Baas - Oahu
- Pierre Bouret - Kauai
- Mark Brown - Oahu
- Jan Bushart - Maui
- Saim Caglayan - Kauai
- Mike Carroll - Lanai
- Joe Fletcher - Maui
- Betty Hay Freeland - Maui
- Darrell Hill - Big Island
- Debra Huse - California
- Carleton Kinkade - Maui
- Jim Lamb - Washington
- Ronaldo Macedo - Maui
- Clark G. Mitchell - California
- Larry Moore - Florida
- Ned Mueller - Washington
- Billyo O'Donnell - Missouri
- Colin Page - Maine
- Macario Pascual - Maui
- Mary Pettis - Minnesota
- Scott Prior - California
- Randall Sexton - California
- Marty Wessler - Kauai
- Mary Whyte - South Carolina



FEBRUARY 26 - MARCH 18, 2010

*Macario Pascual*

Art Night Reception:  
Friday, February 26th, 6 - 9 pm  
120 DICKENSON STREET



Macario Pascual, *Lanai at First Light*, Oil, 30'' x 40'', \$8,500

*See Macario at the 2010 Maui Plein Air Painting Invitational.*

Macario Pascual is infatuated with light. This is evident in each oil painting. With the intuitive eye of a photographer, he composes his works. His limited palette enables him to bring subtle nuances to focus. We always approach his annual show with great respect and excitement. Please join us in celebrating his outstanding work.

MARCH 19 - APRIL 8, 2010 • GEORGE ALLAN

*Gems From the Americas*

120 DICKENSON STREET • Art Night Reception: Friday, March 20h, 6 - 9 pm



George Allan, *Mt. Osorno, Lake District, Chile* - 24'' x 36'' - Oil, \$11,000

George had the opportunity to cruise around the bottom of South America three years ago, and just visited Central America in October. Since he had previously travelled around Canada and Alaska, plus \$99 for 99 days on Greyhound buses around the U.S. back in the '60's, visiting 47 states, there's no telling where this show will lead us, but it's sure to be varied and exciting! As George travels, he documents his favorite locations and relives them with us in his annual show. He brings to life those places through his colorful and light-filled oils. Our 30th show for George will be a special joy. Please join us.

*See George at the 2010 Maui Plein Air Painting Invitational.*



Stuart Sharp, *Red House & Moon*  
8'' x 8'', Acrylic, \$115

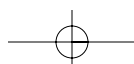


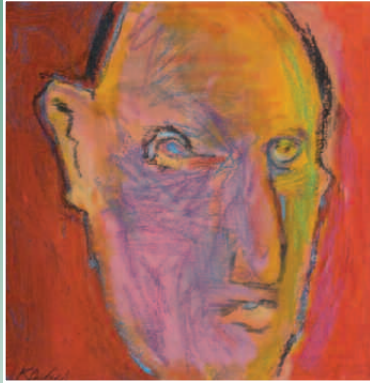
John Shoemaker, *Underriver*  
25'' x 17'', Encaustic-Mixed Media, \$950



Geoff Markovich, *Circle of Life - Humpbacks*, 17'' D  
Original Etching, \$295  
February 5 - 7,

Geoff will be guest artist in  
Lahaina & Kapalua  
(Call for details 661-4402)





Reed Cardwell, *Coming to Our Senses I*  
10" x 10", Mixed Media, \$500



Suzanne de Cillia, *Garden Shade*  
14" x 16" Acrylic, \$700



Barbara Ward, *From Library Park*, 17" x 23"  
Watercolor, \$1,800



Tracy Dudley, *Akala Waterlily*,  
24" x 12" Acrylic, \$1,800  
Giclee Available



Suzy Papanikolas, *Hula Dancer with Tapa Streamers*  
40" x 30" Acrylic, \$3,800

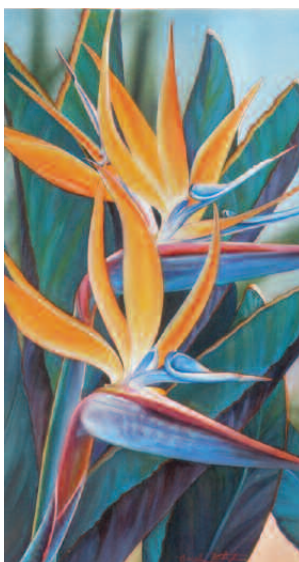
APRIL 10 - 30, 2010  
*Tracy Dudley • Suzy Papanikolas*

Art Night Reception  
Friday, April 10th, 6 - 9 pm

Tracy Dudley's ongoing fascination with the shapes of water and flowers will be continued in this show. She surprises us with inspired color and composition. Suzy Papanikolas' figurative acrylics reveal her love for the hula and the Hawaiian lifestyle.

Please join us at the gala reception for these two outstanding island artists on April 10, 2010.

MAY 1 - 31, 2010  
*Watercolor Show*  
Gallery Artists



Beverly Fotheringham, *Bird of Paradise Pair*, 28" x 15"  
Watercolor, \$2,200

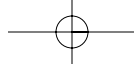
JUNE 4 - 24, 2010  
*Kit Gentry*

Art Night Reception Friday, June 10th, 6 - 9 pm



Kit Gentry, *Cascade*, 9" x 11" Oil, \$2600

Kit Gentry recently moved to Tennessee, but is keeping in close contact with us. His work is primarily represented through us and we look forward to this show in June. More information will be posted on our website. [villagegalleriesmaui.com](http://villagegalleriesmaui.com)



ARTIST-IN-RESIDENCE PROGRAM SCHEDULE NOVEMBER 2009 - JUNE 2010

NOV. 29 - DEC. 1, 2009

BETTY HAY FREELAND  
ARTIST-IN-RESIDENCE

Reception: Sunday Nov. 29th, 3 - 5 pm  
Oil Painting Demonstrations: Nov. 30 & Dec. 1



Left: Paliku, Haleakala Crater, 40" x 20", Oil on Linen, \$4800  
Right: Outside the Crater at Kaupo, 40" x 20", Oil on Linen, \$4800



Fred KenKnight, Maui Blues, watercolor, 21" x 21", \$925

FEB. 7 -9 , 2010

FRED KENKNIGHT  
ARTIST-IN-RESIDENCE

Reception: Sun.,  
February 7th, 3-5 pm  
"Hands-On"  
Watercolor  
Demonstrations  
Feb. 8 & 9

PEGGE HOPPER • ARTIST-IN-RESIDENCE  
MARCH 28 -30, 2010

Exhibition & Reception: Sunday  
March 28th, 3 - 5 pm  
Guest Artist/Print Signing March 29 & 30



Pegge Hopper, Black Popoki , Acrylic, 24" x36", \$6,000

DEC. 27 - 29, 2009  
MACARIO PASCUAL  
ARTIST-IN-RESIDENCE

Reception: Sunday  
Dec. 27th, 3 - 5 pm  
"Hands-On" Mixed Media  
Demonstrations Dec. 28 & 29

Macario Pascual, Cane Haul Road -  
Ukumehame, Oil, 36" x 24", \$5,500



Christina Skaggs, Ulu Tapa Wrap  
Acrylic/Oil/Gold Leaf, 36" x 24", \$1480

JANUARY 17 - 19, 2010  
CHRISTINA SKAGGS  
ARTIST-IN-RESIDENCE

Reception: Sun.  
Jan. 17th, 3 - 5 pm

"Hands-On"  
Demonstrations  
Jan. 18 & 19

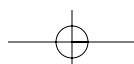
MAY 23-25, 2010

BETH MARCIL ARTIST-IN-RESIDENCE

Reception: Sun. May 23rd, 3 - 5 pm  
"Hands-On" Demonstrations May 24 & 25



Ho'omoe Wai Kahi Ke Kao'o , Watercolor, 15" x 22", \$4800.  
Giclée on paper, 16" x 22" \$400.



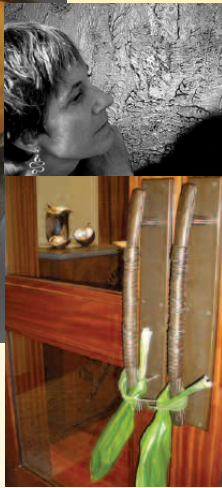


"Gathering Whispers", 11" H x 14.5" D, \$4,300

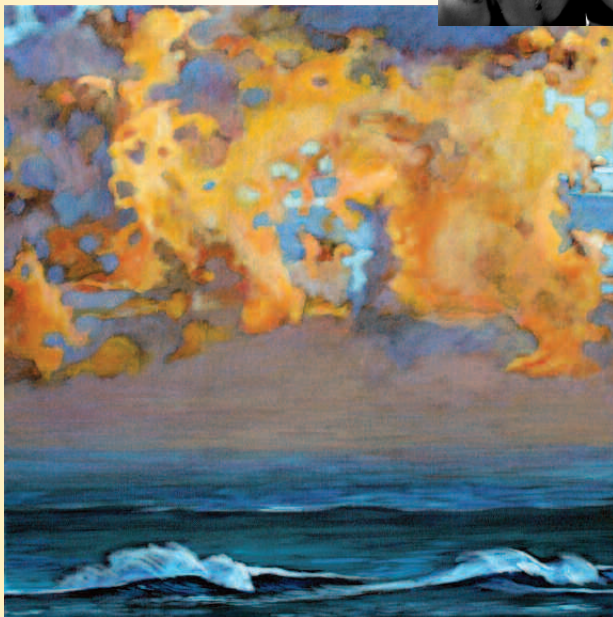
KAY LYNNE SATTLER

Represented in Hawai'i exclusively with Village Galleries, Sattler's recent work can be viewed in our gallery and at the hotel's Waihua Spa. The Sattler Collection featured within the elegant spa environment is breathtaking and not to be missed.

Kay Lynne Sattler is often a guest artist at our Kapalua gallery. We are pleased to provide the opportunity for guests to meet one of Maui's most innovative artists.



TRACY DUDLEY



Tracy Dudley, Pier One, 20" x 20", \$1,800  
Giclée Available on paper or canvas

Tracy Dudley is guest artist on most Thursdays. Be sure to stop by and meet one of Maui's most versatile artists and see her most recent work. Inspired by paddle surfing, her new ocean series is displayed in the Napili Walkway. Tracy is represented exclusively at Village Galleries in Kapalua and Lahaina.

SHAUNA MORRISON



*Iao Needle, Peruvian Opal/Sterling Silver, \$850.*

Shauna, a participating artist in Celebration of the Arts, will be conducting "hands-on" workshops during Celebration 2010 and her new creations will be featured at Village Galleries.

CELEBRATION OF THE ARTS  
APRIL 2-3, 2010

Celebration of the Arts has gained recognition around the entire state and beyond as the premier cultural and educational experience available for visitors and kama'aina.

Artists and Hawaiian practitioners gather from across the state to share their expertise and thoughts on what makes the Hawaiian Islands and their culture so unique. Art, music and hula workshops are to be experienced daily. The Celebration Luau will have the finest traditional foods, complimented with tasty contemporary dishes and desserts. For Celebration Room Packages, call 800. 262. 8440

JUNE 27 - 29, 2010

CINDY CONKLIN • ARTIST-IN-RESIDENCE  
Reception: Sun., June 27 - 29, 4-6 pm



Cindy Conklin, Honu Series  
Watercolor, matted 8" x 8", \$75

Guest Artists



WEDNESDAYS • 1-3 PM  
JOE FLETCHER • OIL

THURSDAYS  
TRACY DUDLEY • ACRYLIC



MONTHLY, THIRD  
WEDNESDAY, 1-3PM  
B. H. FREELAND • OIL



MONTHLY, FIRST  
WEDNESDAY, 3-5PM  
FRED KENKNIGHT



MONTHLY, SECOND  
THURSDAY, 3-5PM  
GEORGE ALLAN • OIL

SUBJECT TO CHANGE.  
PLEASE CALL FOR  
CURRENT SCHEDULE  
669.1800



# GALLERY SHOPPER

villagegalleriesmaui.com

800.346.0585

## CARLETON LAHAINA 2010 POSTER



Carleton, 2010 Lahaina Poster, \$30.00  
"Got Surf - Lahaina" Original Oil, 24" x 30", \$3800



## GEORGE ALLAN



Honua Kai Sunset - Giclée on canvas - 22.5" x 30", \$700

*Prices are unframed, unless noted,  
plus shipping.  
Please call to order 800.346.0585*

## AL FURTADO



The Ohana Beach Party, Giclée on paper, 16" x 20" \$135

## BETTY HAY FREELAND



Honolua View, Giclée on canvas, 20" x 33" \$600,

**THE VILLAGE GALLERIES**  
120 Dickenson Street  
Lahaina, Maui, Hawaii 96761

Presorted  
1st Class Mail  
US POSTAGE  
**PAID**  
PERMIT #75  
PUUNENE, HAWAII

