

Village Galleries, since 1970 - 3 West Maui locations. . .

120 DICKENSON ST. 661.4402 • 800.346.0585

VILLAGE GIFT • FRONT & DICKENSON ST. 661.5199

THE RITZ-CARLTON, KAPALUA

669.1800 800.660.1500

villagegalleriesmaui.com

Village Galleries of Maui Vignette

a thumbnail sketch of gallery events

VOLUME 22 NUMBER 1

Lynn Shue, Owner-Director

Oct. 2008 - May 2009

OCTOBER 2008 - MAY 2009 EXHIBITIONS



Beverly Fotheringham, *Gentle Breeze*
Watercolor 23" x 19", \$2,400 unframed

Beverly Fotheringham's light-filled watercolors are mesmerizing. Her dramatic color, composition and fine drawing ability combine to create masterpieces.



Barbara Ward NWS, *Maui Slippers*, Watercolor
16" x 23", \$950. unframed

Barbara Ward is a signature member of the very prestigious National Watercolor Society. I am proud that she has given us the pleasure of being her only Gallery. Her luminous color and imaginative composition combine to produce a feast for your eyes.



Linda Whittlemore, *Papa Wakea #2*, 9" x 23" \$800 unframed

OCT. 3 - 31, 2008

120 DICKENSON STREET

Contemporary Works on Paper

Art Night Reception, Oct. 3, 6-9pm

Linda Whittlemore's exquisite monoprints reflect her delicate handling of layered color. By keeping her composition minimal, she lets the surface come to life.

Rebecca Wheeler's masterfully handled mixed media monoprints burst with color. Keeping content to a minimum, she exaggerates the large color fields and shows a whimsical approach.

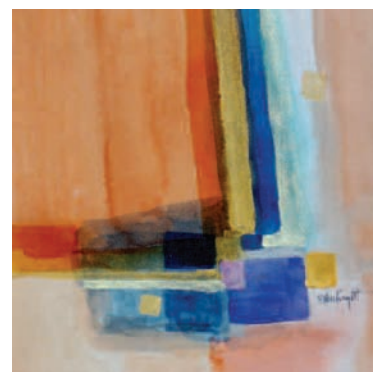
Fred KenKnight's watercolor abstracts are all about creating form and space. His square format works are very popular and can easily be grouped for any space available. Join us for Fred's watercolor demo Friday, October 31st, 10am - 12noon.



Rebecca Wheeler, *Untitled- Garden Series I*,
Mixed Media Monotype, 20" x 16", \$1,800 unframed



Fred KenKnight, *Sunrise Reflections*
Watercolor, 10" x 10", \$275



Fred KenKnight, *New Directions*
Watercolor, 10" x 10", \$275



Joe Fletcher, *Facing Front Street*, Oil, 12" x 36", \$2,150

NOV. 14 - DEC. 4, 2008
120 DICKENSON STREET

Joseph Fletcher

Art Night Reception:
Fri., Nov. 14, 6 - 9 pm

Joe Fletcher's second one-man show will focus on West Maui vistas and street scenes. Painting on-location is his joy and is reflected in his colorful oils. Come and meet the artist at our Friday night reception.

DEC. 12, 2008 - JAN. 1, 2009

120 DICKENSON STREET

Erin Dertner

Art Night Reception

Friday, December 12th, 6 - 9 pm

Erin Dertner's oils and watercolors show her versatility of media. Her oil paintings sing with color and capture her love for the islands. She has recently won the Lahaina 2009 Poster contest (see page 8) and will be signing them at our reception. Please come and meet her and join our reception celebration.



Erin Dertner, *Situated in Paradise*, Oil, 18" x 36", \$3250

JANUARY 2 - 22, 2009 *Carleton • Kit Gentry*

Art Night Reception: Friday, January 2nd, 6 - 9 pm 120 DICKENSON ST.

Kit delights in creating intriguing works that keep you infatuated with our breathtaking landscape. His dramatic handling of light and shadow make him a Maui master. Kit's unequalled skill is reflected in his numerous purchases by the State of Hawaii and collectors across the country.

Our reception for Kit and Carleton is a great way to start the new year. Come join our festive reception!



Carleton, *Harbor Palms*, Oil, 30" x 24", \$4,500

Carleton finds complex subjects his challenge. With our beautiful Maui landscape, he is never disappointed. His on-location oils bring his subjects to life and we relive our tropical paradise.

See Carleton at the 2009 Maui Plein Air Painting Invitational.



Kit Gentry, *Waipo'o Falls*, Oil, 30" x 40", \$21,000



Betty Hay Freeland, *Kula Protea Farm*, Oil, 14" x 22", \$2,400

JANUARY 23 - FEBRUARY 12, 2009

Betty Hay Freeland

Art Night Reception: Friday, January 23rd, 6 - 9 pm
120 DICKENSON ST.

Betty Hay's beautiful oils convey her lifelong love for Maui. She is always on the lookout for that next challenging subject. Her palette knife technique and wonderful sense of color give her works a glowing realism. I look forward each year to her show and invite you to come to her reception and meet one of Maui's exceptional artists.

See Betty Hay at the 2009 Maui Plein Air Painting Invitational.



Morgan Samuel Price, *Harbor Palms* Oil, 11" x 14", \$1800

Excitement is building for our 2009 Plein Air show. Plein Air refers to a painting done on-location in order to capture the true light and atmosphere. Most works are completed in one outing. New visions, from invited established artists from across the nation, bring vitality and energy to this eagerly-awaited event. Please make a point to join us for all the events of the week and especially February 20th for our Gala!



Mike Carrol
at Sunset Paint Out

2009 Invited Artists represent seven states.. .

Hawai'i: George Allan • Pierre Bouret

Mark Brown • Saim Caglayan • Mike Carroll

Michael Clements • Betty Hay Freeland • Darrell Hill

Carleton Kinkade • Ronaldo Macedo

Macario Pascual • Marty Wessler

California: Ken Auster • Jacobus Baas • Marcia Burt

Gil Dellinger • Camille Przewodek

New Mexico: Kevin Macpherson

Texas: Jerry Malzahn • Randall Sexton • Keith Wicks

Florida: Larry Moore • Morgan Samuel Price

Missouri: Billyo O'Donnell • **Minnesota:** Mary Pettis

FEBRUARY 14 - 21, 2009 FOURTH ANNUAL MAUI PLEIN AIR PAINTING INVITATIONAL

Schedule of Events

Open to the public - no charge.

Saturday, February 14, noon to 3 p.m.

Kick off Paint Out in Kapalua -- The 25 invited Artists begin the event at Kapalua Bay, Honolua Bay, and D.T. Fleming Beach areas. The 25 freshly painted works of art will be available for purchase from 4pm-9pm at Village Galleries, located off the lobby at The Ritz-Carlton, Kapalua and throughout the week.



Camille Przewodek at Kapalua

Tues., Feb. 17, 7 p.m. -- ***The Basics of Art Collecting***

Jean Stern, Executive Director of The Irvine Museum in California, will conduct a lecture, at the Pioneer Inn, Lahaina.

Wed., Feb. 18, 4 p.m. -- ***The Sunset Paint Out*** at Kamehameha Iki Park is another chance to see all of the artists. They will gather at the beach park next to 505 Front Street Shops to find inspiration in the sunset, beach scenes, and canoes on display in the park.

Fri., Feb. 20, 9 a.m. to 11 a.m. -- ***Lahaina Harbor Quick Draw***

The week climaxes on Friday when the artists start a painting at the sound of the horn and finish it within two hours.

Fri., Feb. 20, 5 - 9 p.m. -- **Gala Reception at The Village Gallery, 120 Dickenson Street** This evening, the three favorite paintings from each artist, painted during the week, plus the Quick Draw painting, will be unveiled at the reception. Art collectors will have a first glimpse to view and purchase these 100 outstanding works.

Sat., Feb. 21, 9 a.m. to 11 a.m. -- ***Coffee & Pastries with the Artists***

On Saturday morning, the artists will replace sold works from Friday night, and the public will have a second opportunity to meet the artists at the gallery. The show ends at 9 p.m. that evening.

FEBRUARY 27 - MARCH 19, 2009

Macario Pascual

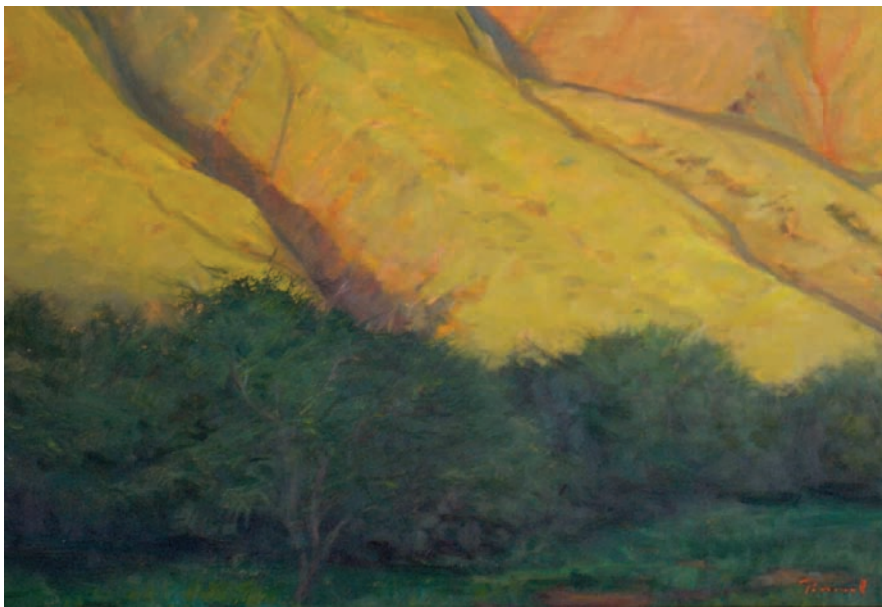
Art Night Reception:

Friday, February 27h, 6 - 9 pm

120 DICKENSON STREET

Macario finds the light on Maui entrancing. He portrays in his luminous oils the flowing color of early morning or sunset with quiet resolve and peace. Taking the everyday and making it extraordinary is so evident in all Mac's work. You are invited to celebrate with us at his opening reception.

See Macario at the 2009 Maui Plein Air Painting Invitational.



Macario Pascual, *Light at Ukumehame*, Oil, 13" x 19", \$3200

MARCH 20 - APRIL 9, 2009

George Allan Around the World in 30 Days

Art Night Reception: Friday, March 20h, 6 - 9 pm

120 DICKENSON STREET



George Allan, *Wat Chalong Temple*, 18" x 14", Oil, \$2900.

Wat Chalong is a temple compound in Phuket, Thailand, with 3 temples and other interesting elements. The pond formed the center of serenity, and the monks moved with calm and tranquil composure.

George Allan's show is always full of fun and excitement. George enjoyed four far-flung trips during 2007-2008, one of them around the world. After taking more than 4,000 photos, he has picked just a few of his favorites to paint, and hopes you have a wonderful time with his globe-trotting results.

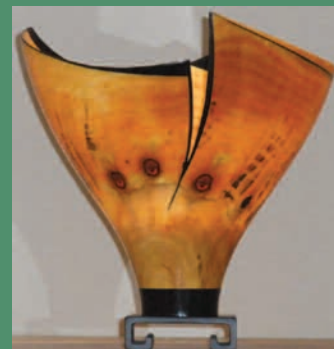
George will present an array of Maui works to round out his annual show. Don't miss our gala reception for George.

See George at the 2009 Maui Plein Air Painting Invitational.

Be sure to ask . . .

What's New?

N. Robert Wagstaff *'Elepaio*, Gouache, 4" x 5", \$700



Le Van Keola Sequeira
Makani Palua Series
Cook Pine/Wenge/Pheasant,
12" H, \$2900



Stuart Sharp, *Kahana Morning*
Acrylic, 20" x 16", \$275.00



Jamie Roth, *Harbor Reflections*
12" x 16", Oil, \$850

Don't miss our gift shop in the Masters Reading Room at the Baldwin House. .

VILLAGE GIFT & FINE ART



G. D. Markovich, *Sea Turtle IV*, 11" x 10", \$80.00 Original etching on mulberry paper and collaged onto cast silk with orchid petals sculpted by the artist. Geoff will be guest artist for Art Night, Feb. 6th. Please call for details.



Our Village Gift is six years old and continues to present a luscious array of gifts, prints, collectables and small originals. We are thrilled by our return customers who all comment on our unique mix.

Albert Molina, *Honu Trio*, Ceramic, 13" x 5", \$60.00



Deybra, *Rainbow Fish*, 13" x 17", Mixed Media, \$250, part of a series of 3 dimensional hanging sculptures



Magda Szabo, *Maui Rooster*, 4" x 5" Watercolor, \$695

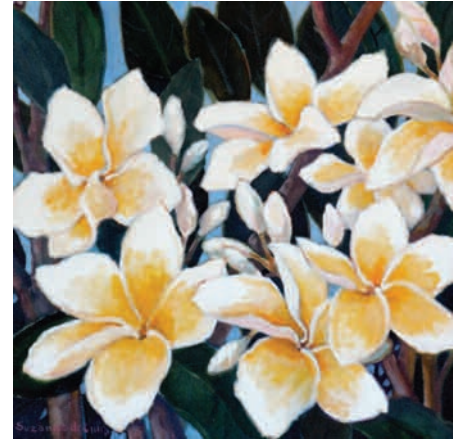
APRIL 10 - 30, 2009

Maui in Bloom

Art Night Reception
Friday, April 10th, 6 - 9 pm



Lisa Kasprzycki
White Hibiscus, Oil, 4" x 5", \$250
Yellow Hibiscus, Oil, 4" x 5", \$250



Suzanne de Cillia, *Plumeria and Buds*, Acrylic, 20" x 20", \$1400

This is a small sampling of our great selection of island florals.
April will be our flower garden month - Come and pick one!



Margaret Bedell, *Conga I, II & III*, Giclée, 3 panels each 40" x 27", \$1200 each panel

MAY 1 -31, 2009

Figurative Works

Group Show focusing on the people of Hawai'i
Al Furtado, Cindy Conklin, Diana La Com,
Beth Marcil and others



Al Furtado, *After the Recital*, Acrylic, 28" x 40", \$6500
Giclée Available on paper or canvas



Diana La Com, *Kumu Hula*, Acrylic
28" x 36", \$3400



Beth Marcil, *Morning Harvest #2*, Oil, 28" x 22", \$4800

ARTIST-IN-RESIDENCE PROGRAM SCHEDULE OCTOBER 2008 - MAY 2009

OCTOBER 26-28, 2008 JOE FLETCHER

ARTIST-IN-RESIDENCE Reception: Sun. Oct. 26th, 4 - 6 pm
 "Hands-On" Oil Painting Demonstrations Oct. 27 & 28



Joe Fletcher, *Kapalua Coastline*, 12" x 36", \$2,400

NOV. 26 - 28, 2008

BETTY HAY FREELAND
 ARTIST-IN-RESIDENCE

Reception: Sunday Nov. 26th, 4 - 6 pm
 Oil Painting Demonstrations: Nov. 26 & 28



Left: *Paliku, Haleakala Crater*, 40" x 20", Oil on Linen, \$5200
 Right: *Outside the Crater at Kaupo*, 40" x 20", Oil on Linen, \$5200

DEC. 14 - 16, 2008

MACARIO PASCUAL
 ARTIST-IN-RESIDENCE

Reception: Sunday Dec. 14th, 4 - 6 pm
 "Hands-On" Mixed Media
 Demonstrations Dec. 15 & 16



Macario Pascual, *Palm Trees at Kamehameha*
 Oil, 12" x 16", \$1650

JANUARY 25 - 27, 2009

SUZY PAPANIKOLAS • ARTIST-IN-RESIDENCE

Reception: Sun.
 Jan. 25th, 4 - 6 pm

"Hands-On"
 Demonstrations
 Jan. 26 & 27

At The Terrace
 Restaurant
 you can experience
 this collection
 of Suzy's wonderful
 paintings capturing
 the essence of the
 Hula Kahiko and
 island life.



Suzy Papanikolas, *Wahine in Tapa Skirt*, 30" x 30", \$2,400



Shauna Morrison,
*Maui Mermaid
 Pendant*
 Sterling Silver, \$395



FEB. 22 - 24, 2009

SHAUNA MORRISON
 ARTIST-IN-RESIDENCE

Reception: Sun., February
 22nd, 4-6 pm
 "Hands-On"
 Demonstrations
 Feb. 23 & 24

MARCH 15-17
 2009

PAMELA
 ANDELIN

ARTIST-IN-RESIDENCE
 Exhibition &
 Reception: Sunday
 March 15th, 4 - 6 pm
 "Hands-On"
 Demonstrations
 March 16 - 17
 Please contact the
 gallery for
 information on
 painting with Pam.
 669-1800



Pamela Andelin, *Kula Onion Farm*, 20" x 24", \$3950

KAY LYNNE SATTLER



Represented in Hawai'i exclusively with Village Galleries, Sattler's recent work can be viewed in our gallery and at the hotel's recently-renovated Waihua Spa. The Sattler Collection featured within the elegant spa environment is breathtaking and not to be missed.

Kay Lynne Sattler is a weekly participant in our guest artist program on Friday mornings, 10am - 12noon. We are pleased to provide the opportunity for guests to meet one of Maui's most innovative artists.



Tracy Dudley, Ryne's Green Orchid, 30" x 40", \$4200
Giclée Available on paper or canvas

Tracy Dudley is guest artist on Tuesdays, 4:30- 6:00 pm. Be sure to stop by and meet one of Maui's most versatile artists and see her most recent work. Inspired by paddle surfing, her new ocean series (see page 8) is displayed in the Napili Walkway. Tracy is represented exclusively at Village Galleries in Kapalua and Lahaina.



Cindy Conklin, "Honu Petroglyphs"
Watercolor, 6" D, \$245 unframed

THE 17TH ANNUAL
CELEBRATION OF THE ARTS

APRIL 10 -11, 2009

Celebration of the Arts has gained recognition around the entire state and beyond as the premier cultural and educational experience available for visitors and kama'aina.

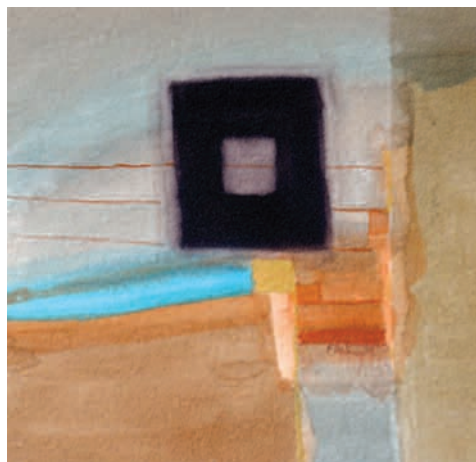
Village Galleries will host a special Celebration of the Arts exhibition in the gallery. You will be able to meet gallery artists presenting painting demonstrations and many complimentary "hands-on" workshops 10am -4pm on Friday and Saturday.

Artists and Hawaiian practitioners gather from across the state to share their expertise and thoughts on what makes the Hawaiian Islands and their culture so unique. Art, music and hula workshops are to be experienced daily. The Celebration Luau will have the finest traditional foods, complimented with tasty contemporary dishes and desserts. For Celebration Room Packages, call 800. 262. 8440

MAY 10 -12, 2009

FRED KENKNIGHT
ARTIST-IN-RESIDENCE

Reception: Sun., May 10, 4-6 pm
"Hands-On" Watercolor Demonstrations
May 11 & 12



Fred KenKnight, Window to Tranquility
Watercolor, 10" x 10", \$275

Guest Artists



TUESDAYS • 1-3 PM
JOE FLETCHER • OIL

TUESDAYS • 4:30 - 6 PM
TRACY DUDLEY • ACRYLIC



MONTHLY, THIRD
WEDNESDAY, 1-3PM
B. H. FREELAND • OIL



MONTHLY, FIRST
WEDNESDAY, 4-6PM
FRED KENKNIGHT



MONTHLY, SECOND
THURSDAY, 4-6PM
GEORGE ALLAN • OIL



MONTHLY FIRST
FRIDAY • 10AM - 1:00PM
N. ROBERT WAGSTAFF

FRIDAY • 10AM - 12:00PM
KAY LYNNE SATTLER

FRIDAY • 4:00PM - 6:00PM
SHAUNA MORRISON

Schedule is subject to change.
669-1800

SUZY PAPANIKOLAS



Wahine in Orange Skirt
Giclée on canvas in three sizes
40" x 20 \$1200 • 28" x 14" \$588 • 14" x 7" \$225.

BETH MARCIL



Ho'omoe Wai Kahi Ke Kao'o
Giclée on paper 16" x 22" \$400,
other sizes available by special order

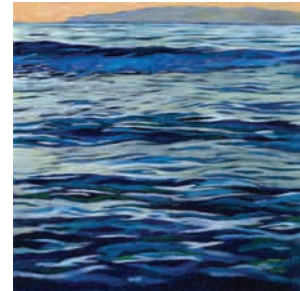
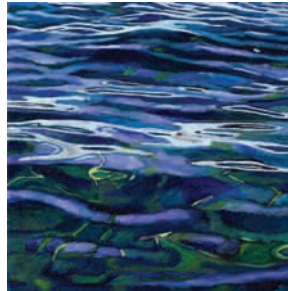
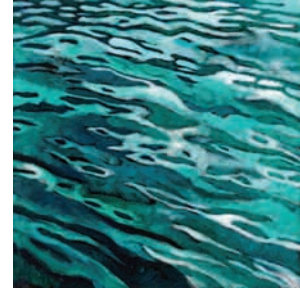
*Prices are unframed,
unless noted,
plus shipping.
Please call to order
800.346.0585
Visit us at
villagegalleriesmaui.com*

ERIN DERTNER



Erin Dertner, 2009 Lahaina Poster, \$30.00
Front Street Flourish, 20 x 30, Oil, \$3200

TRACY DUDLEY

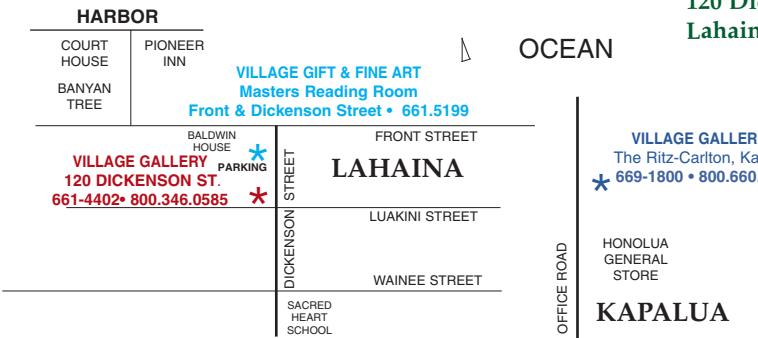


Kai Nalu III, Kai Nalu IV
Kai Nalu VII, Kai Nalu VIII
Giclée Available on paper or canvas
Canvas. S/N 10" x 10" \$225 - Paper S/N 11" x 11" \$225
Other sizes by special order

Please inquire about available original acrylic paintings
of the Kai Nalu series.

THE VILLAGE GALLERIES
120 Dickenson Street
Lahaina, Maui, Hawaii 96761

Presorted
1st Class Mail
US POSTAGE
PAID
PERMIT #75
PUUNENE, HAWAII



HONOAPIILANI HWY 30

+ 10 MILES TO KAPALUA +