

Village Galleries, since 1970 - four West Maui locations. . .

120 DICKENSON ST. 661.4402 • 800.346.0585

VILLAGE GIFT FRONT & DICKENSON ST. 661.5199

CONTEMPORARY 180 DICKENSON STREET
661.5559 800.483.8599

THE RITZ-CARLTON, KAPALUA
669.1800 800.660.1500

villagegalleriesmaui.com

Message from Lynn

As our 38th year begins, we hardly can believe how the years have flown by.

After 14 years, our gallery at the Ritz-Carlton, Kapalua, along with the hotel, has been given a fresh new look. See page 6 for more details. On your next visit to West Maui, set aside some time to explore the newly transformed Ritz-Carlton Hotel, Kapalua and our wonderful gallery located off the lobby. As we go to press, plans are for our gallery to be open again in December.

Our schedule for 2008 will spotlight exceptional new work by our fine local artists and we await each show with renewed anticipation. The third annual Plein Air Invitation promises to be the best yet. See page 5 for the full schedule of events. We so appreciate all our terrific art lovers who make each day a joy.

Many return customers find our gift shop a favorite for unique and handcrafted creations. Come browse through and you'll surely find a treasure.



Joyce Clark, *Shores of Kamaka* Oil, 18" x 24" \$3,800

We wish Joyce Clark hugs and much aloha in her 92nd year. Her paintings never cease to amaze our eyes and lift our spirit.

Village Galleries of Maui Vignette

a thumbnail sketch of gallery events

VOLUME 21 NUMBER 2

Lynn Shue, Owner-Director

Nov. 2007 - April 2008

NOVEMBER 2007 - APRIL 2008 EXHIBITIONS

NOVEMBER 23 - DECEMBER 13, 2007 • 120 DICKENSON STREET

Joseph Fletcher • LeVan Keola Sequeira

Art Night Reception: Friday, Nov. 23, 6 - 9 pm

Joe's ongoing infatuation with Maui is evident in his joyful and colorful on-location oils. We anticipate our show will take you around the island to his special painting spots. Come and join us for this inspiring exhibition featuring two of Maui's most sought after artists.



Joe Fletcher, *Resting on the North Shore*
Oil, 36" x 24" \$3,800



Keola LeVan Sequeira *Makani Pa Lua*, \$2,500
Makani Ku, \$3,400 *Manu Mana*, \$3,150
Cook Island Pine with Pheasant & Wenge

Keola LeVan Sequeira • To Honor the Tree Spirit
Artist's statement...*Over years of creating in wood, I've held the tree in reverence and respect. I've learned from its spirit. By working in form and finish, I bring out the very best each tree has to offer. My work is to honor this gift of Nature.*



N. R. Wagstaff, *Caught in the Act I*, Gouache, 11" x 20", \$4,200

With his keen eye to detail, Robert paints Maui's endemic flora and fauna in gouache. As a naturalist, his prime concern is correctly representing his carefully chosen subjects. This show will spotlight two new works that have, for the first time, incorporated the human element. We proudly present this exhibition for one of Maui's most respected artists.

Stephen's approach to pastel painting is immediate and intuitive. Choosing only subjects that lend themselves to his individual style, he creates his glowing, light-filled work. We are pleased to present a group of his smaller works.

DEC. 14, 2007 - JAN. 3, 2008

120 DICKENSON STREET

N. Robert Wagstaff

Stephen Burr

Art Night Reception

Friday, December 14th, 6 - 9 pm



Stephen Burr, *Still Life with Gardenia*
Pastel, 21" x 15" \$995

JANUARY 4 - 24, 2008 • *Carleton • Kit Gentry*
 Art Night Reception: Friday, Jan.4th, 6 - 9 pm 120 DICKENSON STREET

Carleton enjoys his on-location experience of capturing local scenes and hidden back streets. He captures the flickering light and quiet shadows with a smooth and watchful eye. His attitude is echoed in his bright and optimistic oils. Subjects include stilllife, figure and landscape. Being on-location gives him the opportunity to catch those unusual light effects. He will certainly consider your request for commissions of portrait or specific landscape paintings. Our reception for these two fine artists is a wonderful beginning for 2008.

See Carleton at the Third Maui Plein Air Painting Invitational.



Carleton *Lahaina Morning* Oil 34" x 40" \$6,400



Kit Gentry *Hatiheu Spires* Conte & Charcoal 15" x 22" \$2,400

Kit is recognized by his finely crafted oils and pastels that depict subjects of dramatic splendor. His consummate approach to painting realism sets him apart.

"After a trip to Tahiti and the Marquesas Islands in 2007, my latest work features imagery from the South Pacific. The Marquesas Islands offer some very unique and dynamic landforms that instantly set them apart from other island groups. I'm also working with some new drawing and painting materials, and returning to an old medium that I've neglected during the past couple of years: pastel."

JANUARY 25 - FEBRUARY 14, 2008

Betty Hay Freeland • Maui On Location

Art Night Reception: Friday, January 25th, 6 - 9 pm 120 DICKENSON ST.

Betty Hay Freeland is very well known for her colorful palette knife oils of Hawaiian landscape. We look forward each year to her beautiful show and this year's focus is on her on-location work. Always finding new vistas to capture, we are sure this show will be extraordinary. Join us in celebrating at our gala reception.

See Betty Hay at the Third Maui Plein Air Painting Invitational.

B. H. Freeland *Kipahulu Kuleana*
 Oil 24" x 36" \$4,800



FEBRUARY 15 - MARCH 6, 2008

Macario Pascual

Art Night Reception: Friday, February 15h, 6 - 9 pm
 120 DICKENSON STREET

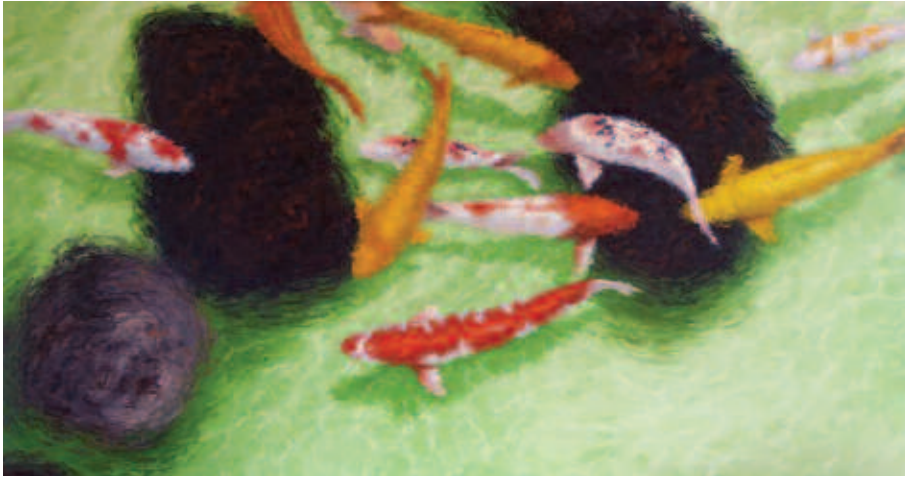
Macario Pascual captures the quiet atmosphere of Maui in his sensitively handled oils. By using his limited palette, Macario's paint flows across the surface with harmonious and refined color. We eagerly anticipate Macario's show which will include plein air work along with studio paintings. We invite you to explore his new work at our reception for this gifted artist.

See Macario at the Third Maui Plein Air Painting Invitational.

Macario Pascual *Kipahulu Kuleana*
 Oil 11" x 19" \$3,000

MARCH 7 - 27, 2008 • *George Allan*

Art Night Reception: Friday, March 7, 6 - 9 pm 120 DICKENSON STREET



George Allan, *Koi Ohana* Oil, 32" x 60" \$23,000

George expresses his zest for life in every painting. His almost frosting-like application of oil gives his work a lively and sensuous surface. Being a true colorist, he pushes his high key paintings to the edge. We always look forward to our festive opening reception for George and invite you to join us.

See George at the Third Maui Plein Air Painting Invitational.

What's New? . . .

We recently received new work from Barbara Ward and felt this watercolor of her grandmother's rocker just had to be shared. As a member of the NWS for many years she is considered a master and we agree.



Barbara Ward, *Blue and White Quilt*
Watercolor, 22" x 30", \$2,600

Maui artists Jamie Roth has been with us for a year and his on-location landscapes are getting much attention. He will be adding some new pieces to our December Group Show.

MARCH 28 - APRIL 17

Pamela Andelin

Art Night Reception

Friday, March 28th, 6 - 9 pm

Pam Andelin takes color to a new level. From behind her on-location easel, she turns the everyday into an exciting experience. We eagerly await her new work and hope you will join us in celebrating her annual show. Mark your calendar for March 28th!



Pamela Andelin *Makena*, Oil, 17" x 21" \$3,400



Jamie Roth, *Wailea Point*
Oil, 14" x 18", \$975



Tracy Dudley *Midnight Blue*
Acrylic 40" x 30" \$4,200

Tracy Dudley

APRIL 18 - MAY 8, 2008

Art Night Reception

Friday, April 18th, 6 - 9 pm

Tracy's vibrant and charming acrylic paintings are a sight to behold. Color that glows from within adds such dimension to beautifully drawn island flowers. The strong scale of subject to format envelopes your view. We invite you to partake in this sumptuous show and join our reception for one of Maui's most talented artists.



Suzanne de Cillia, *Surinam Cherries*, Oil, 8" x 10", \$360

On a recent hike on Maui, Suzanne de Cillia found these unusual Surinam cherries and she had to sit right down and paint this delightful painting. Her work just reaches out and grabs you. Come in and view her recent work. We have a great selection.

NOVEMBER 30 - DECEMBER 20, 2007
 CONTEMPORARY - 180 DICKENSON STREET
Annual Printmakers Show

Art Night Reception: Friday, November 30th, 6 - 9 pm

Linda Whittemore creates her stunning monoprints by carefully composing and layering her oil based inks. Her work has a quiet meditative surface. We present in this show an array of various printmaking techniques including silkscreen, etching and lithographs from artists in Hawaii and elsewhere.



Linda Whittemore *For Art's Sake*
 Monotype, 30" x 22", \$2,400

DECEMBER 21 - JANUARY 10, 2008
 CONTEMPORARY - 180 DICKENSON STREET
 COLOR BLAST • GROUP SHOW

Art Night Reception: Friday, December 21st 6 - 9 pm



Anne Irons *Public Access* Monoprint 22" x 30", \$1,200

We group together artists who put the love of color foremost in their art. Anne Irons' watercolors and monoprints are great examples of color used to communicate feelings. Also included will be Fred KenKnight, George Brinner and Vijay. We start 2008 with a blast of color!

JANUARY 11 - 31, 2008
 CONTEMPORARY - 180 DICKENSON STREET
 DAVO • ROYALTY AND LEGENDS

Art Night Reception: Friday, January 11th, 6 - 9 pm



Yellow Submarine I, Acrylic, 33" x 33", \$1,400

Davo has great interest in Hawaiiana past and present. This 2008 show will include new works of royalty and other icons. With the 40th anniversary of Sgt. Pepper and the Yellow Submarine the Beatles will be a focus. A new series on Jim Morrison was inspired by a trip to Paris and Pere La Chaise cemetery. Come party at his opening with famous guests and artists.

FEBRUARY 1 - 20, 2008

Suzy Papanikolas

Art Night Reception: Friday,
 February 1st, 6 - 9 pm



Suzy Papanikolas
Leis for Queen Lili'uokalani,
 Acrylic 36" x 24" \$2,850

Suzy's intimate paintings of hula dancers define her unique style of Hawaiiana. Her work also includes other aspects of local lifestyle. Her paintings have grace and aloha. We eagerly anticipate her beguiling show. Join us in our reception honoring this exemplary artist.



2008 MAUI PLEIN AIR PAINTING
INVITATIONAL
Schedule of Events

Saturday, February 16, noon – 3 p.m. -- The 25 artists kick off the event with the **Kick off Paint Out** at the D.T. Fleming Beach area. Throughout the week, the freshly painted works of art will be on display at Village Galleries located off the lobby at The Ritz-Carlton Hotel, Kapalua.

Tuesday, February 19, 7 p.m. -- Jean Stern of California, Executive Director of The Irvine Museum and Artist Kevin Macpherson of New Mexico, will conduct a joint lecture, "**Magnificent Obsessions: From Monet's Garden to Macpherson's Pond**" at the Pioneer Inn, Lahaina.

Wednesday, February 20, 4 p.m. -- **The Pacific'O Sunset Paint Out** at Kamehameha Iki Park is another chance to see all of the artists in the same vicinity. The artists will gather at 4PM at the popular beach park next to 505 Front Street to find inspiration in the sunset, beach scenes, and canoes on display in the park.

Friday, February 22, 9 a.m. to 11 a.m. -- The week climaxes on Friday, February 22 with the **Lahaina Harbor Quick Draw**, when the artists start a painting at the sound of the horn and finish it within two hours.

Friday, February 22, 5 p.m. -- The three best paintings from each artist from the week plus the Quick Draw painting will be unveiled at the **Maui No Ka 'Oi Magazine Gala Reception** at the Village Gallery Contemporary in Lahaina. Art collectors and art lovers will have a first glimpse to view and purchase the fresh work.

Saturday, February 23, 9 a.m. to 11 a.m. -- On Saturday morning, the artists will replace sold works and the public will have a second opportunity to meet the artists at the **Coffee and Pastries with the Artists** event at the gallery. The show ends at 9 p.m. that evening.

Sponsors: Premier Sponsor The Ritz-Carlton Club, Kapalua Bay; County of Maui Office of Economic Development; Hawaii Tourism Authority; Maui No Ka 'Oi magazine; Islanders- Hawaii Plein Air Painters; West Maui Cultural Council; Pacific'O Restaurant; Village Galleries; Maui Printing Co.; Pioneer Inn



Mary Pettis, *Lavendar Light*, Oil, 12" x 16", \$1,650
See Mary at the Third Maui Plein Air Painting

FEBRUARY 29 - MARCH 20, 2008
CONTEMPORARY - 180 DICKENSON STREET
Art Night Reception: Friday, February 29th, 6 - 9 pm

Stuart Sharp



Illusion IX, 18" x 18", Acrylic, \$520

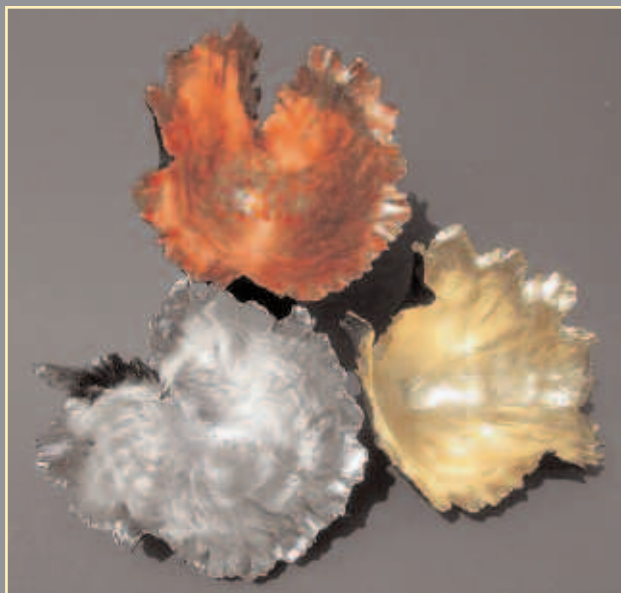
Stuart's abstracts combine layering rich color with unique composition. His paintings recall a mystery, memory or quiet reflection. Stuart is considered the master of abstract on Maui. We always anticipate his annual show with great expectation.

MARCH 21 - APRIL 10, 2008
CONTEMPORARY - 180 DICKENSON STREET
Art Night Reception: Friday, March 21st, 6 - 9 pm
GROUP SHOW



Marian Freeman, *Still Life with Gardenias*, Oil, 20" x 16", \$950

Marian is one of Maui's most respected and creative artists. She is not limited to one style or media but uses what works best for the painting. Her career has spanned decades and we are proud to represent this fine lady. Joining her will be a selected group of other notables. We would so enjoy your attendance at our reception,



Kay Lynne Sattler *Fountain of Fire/Trio of Colors* 7" H. X 7" D.
Hand coiled clay gilded with gold, copper and palladium leaf.
\$825-\$775- \$850

The AAA Five-Diamond Ritz-Carlton, Kapalua is currently embarking on a \$130 million transformation and will re-open to the public on January 7, 2008. The resort will feature a refined organic architecture deeply rooted in Hawaiian culture. As we go to press, we plan to open our gallery in December, so if you are on Maui before January 7th please call us for an update.

We are pleased to let you know the the large scale paintings in the permanent collection by gallery artists George Allan, Joyce Clark, Betty Hay Freeland and Fred KenKnight will remain on display in the public areas for your enjoyment.



The newly transformed guest rooms and suites will include works by Cindy Conklin. The Club Room will display work by Maui's Naturalist painter N. Robert Wagstaff. The images featured on this page are the ones you will see in these areas.

Both artists are active in our Guest Artist and Artist-in-Residence programs and Celebration of the Arts.

Hawaii 'O'o Giclée on Paper
S/N 150 12" x 10", \$125
Larger size print available by special order.



'Amakihi Gouache 12" x 15", \$3500
Giclée on Paper S/N 150 12" x 15", \$125

**ARTIST-IN-RESIDENCE SCHEDULE
JANUARY - APRIL 2008**

JANUARY 27 - 29

**FRED KENKNIGHT
ARTIST-IN-RESIDENCE**

*Reception: Sunday
Jan. 27th, 4 - 6 pm*

*"Hands-On"
Demonstrations
Jan. 28 & 29*

Fred KenKnight, *Journey*
Watercolor, 10" x 10", \$275

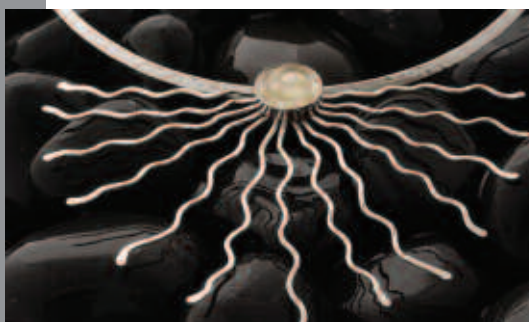


FEBRUARY 24 - 27, 2008

SHAUNA MORRISON ARTIST-IN-RESIDENCE

Reception: Sun., February 24th, 4-6 pm

"Hands-On" Demonstrations • Feb. 26 & 27



Shauna Morrison, *A New Day Begins - Maui Sunrise*
Series Pendant \$465.

Shauna Morrison will be presenting a new collection of her latest hand-made jewelry creations. Join us Sunday, Feb.24th at the opening reception. "Hands-on" jewelry workshops will take place on Monday and Tuesday.

APRIL 27 - 29, 2008 • CINDY CONKLIN

ARTIST-IN-RESIDENCE

*Reception: Sunday
April 27th, 4 - 6 pm
"Hands-On"*

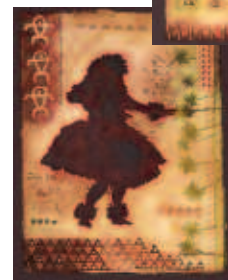
*Demonstrations
April 28 & 29*



Cindy Conklin
Kapa Kahiko Kapalua I
Giclée on Paper. 20" x 15.5"
S/N \$200

A companion piece is also available in the same size.

Cindy Conklin
Hula Kahiko Wahine Kapalua
Hula Kahiko Kane Kapalua
Giclée on Paper. 14" x 11.5" S/N
\$100 each





Al Furtado, *Hear My Story of Hawai'i* Acrylic, 36" x 24", \$4500.



Al Furtado, *"Our Songs of Hawai'i are Kolohe (rascally)* Acrylic, 30" x 24", \$4500.



Al Furtado
"Pupukahi i holomua (Unite and Move Forward)"
Acrylic 36" x 24", \$4500.

THE 16TH ANNUAL CELEBRATION OF THE ARTS • MARCH 21 -23, 2008

The theme for 2008 centers around "the power of the voice" in chant, prayer, song and much more. As we go to press, excitement is building for the first "Celebration" in the newly transformed Ritz-Carlton Hotel, Kapalua, inspired by Hawaiian culture. Celebration of the Arts has gained recognition around the entire state and beyond as the premier cultural and educational experience available for visitors and kama'aina.

Village Galleries will host a special Celebration of the Arts exhibition in the gallery. You will be able to meet gallery artists presenting painting demonstrations and many complimentary "hands-on" workshops 10am -4pm on Friday and Saturday.

Artists and Hawaiian practitioners gather from across the state to share their expertise and thoughts on what makes the Hawaiian Islands and their culture so unique. Art, music and hula workshops are to be experienced daily. As usual, the Celebration Luau will have the finest traditional foods, complimented with tasty contemporary dishes and desserts. For Celebration Room Packages, call 800. 262. 8440



Carleton: *Lahaina Racer*, 12" x 18", \$1,800
See Carleton at the *Third Maui Plein Air Painting Invitational*.

You are cordially invited to the third annual Maui Plein Air Painting Invitational.

**FEBRUARY 16, 2008
KICK OFF PAINT OUT.**

Twenty - five premier plein air artists from around Hawaii and the mainland will once again converge on the island of Maui to capture its magnificent beauty and splendor en plein air.

Saturday, February 16, noon – 3 p.m. -- Artists kick off the event with the Kick off Paint Out at the D.T. Fleming Beach area. Starting at about 4pm and throughout the week, these freshly painted works of art will be on display and available for purchase at Village Galleries.

(Located off the lobby at The Ritz-Carlton Hotel, Kapalua)
See page 5 for the complete schedule of the week's events.

WEEKLY GUEST ARTISTS

MONDAYS, 4-6 PM
FRED KENKNIGHT

TUESDAYS
11AM - 1:00PM
CARLETON KINKADE

TUESDAYS
4 - 6 PM
TRACY DUDLEY



Tracy Dudley *Orenji Ogon I*
Giclee on canvas in two sizes
40" x 20" \$825. • 24" x 12" \$475

MONTHLY, THIRD WEDNESDAY, 4-6PM
B. H. FREELAND

WEDNESDAYS, 4-6PM
SHAUNA MORRISON

THURSDAYS
10AM - 12 PM
KAY LYNNE SATTLER

FRIDAYS
10AM - 1:00PM
N. ROBERT WAGSTAFF

AND OTHERS...
SCHEDULE IS SUBJECT TO CHANGE, PLEASE CALL TO CONFIRM THIS WEEK'S SCHEDULE
669-1800

BETTY HAY FREELAND



Honolua Giclée on canvas in three sizes
 26x42 \$1200 • 20x32 \$600 • 8.5x13.5 \$250
Serenity at sunset at Honolua Bay. The bay has become a public controversy on development vs. parks and open space. At the present, we can enjoy the beauty and peacefulness of Honolua Bay.

G. D. MARKOVICH



No Na Hono Kai
 Etching, 24" x 18.5", \$295

CINDY CONKLIN



Kane He'e Nalu 'Ekahi
 Giclée on Paper. 14" x 11" S/N \$100 each

N. ROBERT WAGSTAFF



Tapestry 'Akohekohe
 Canvas Edition 19-3/4" x 11-1/2" \$220

*Prices are unframed ,
 unless noted,
 plus shipping.
 Please call to order
 800.346.0585]
 Visit us at
 villagegalleriesmaui.com*

GEORGE ALLAN



Saturday Morning Chores, Original Oil, 28" x 36", \$14,000
 Giclée on canvas in two sizes: 28" x 36", \$1,200 or 16" x 20", \$400



THE VILLAGE GALLERIES
 120 Dickenson Street
 Lahaina, Maui, Hawaii 96761

Presorted
 1st Class Mail
 US POSTAGE
PAID
 PERMIT #7
 MAKAWAO, HAWAII